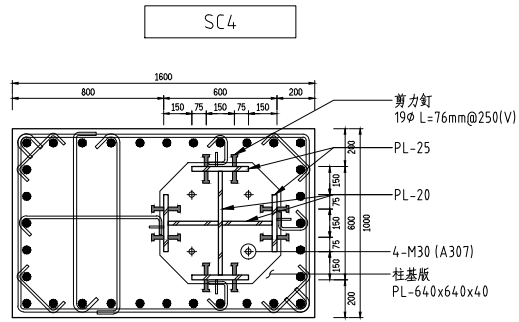
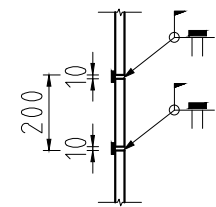


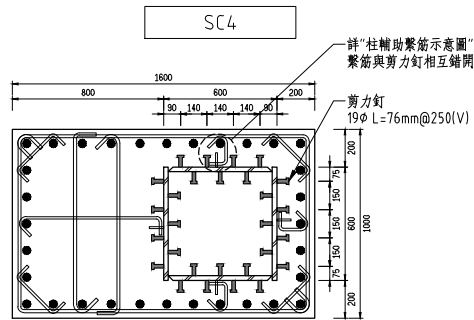
a-a 灌漿口後封板詳圖



RC斷面 1600x1000mm
●32-#10 (柱主筋直通連續)

柱端部(h/4)區箍筋: #4@10cm
柱中央區箍筋: #4@10cm
梁柱接頭區箍筋: #4@10cm

SECTION A-A

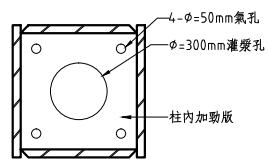


RC斷面 1600x1000mm
●32-#10 (柱主筋直通連續)

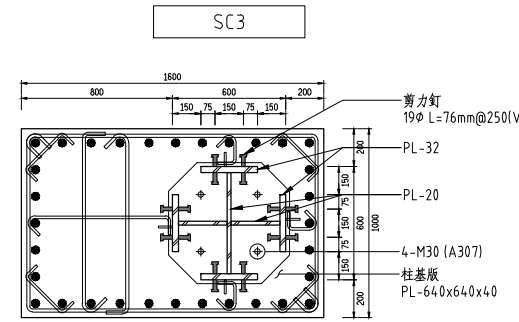
柱端部(h/4)區箍筋: #4@10cm
柱中央區箍筋: #4@10cm
梁柱接頭區箍筋: #4@10cm

SECTION B-B

- 註:
- 柱頭之主筋在施工過程中須特別注意排置之精度以免妨礙鋼柱安裝,若有所妨礙時,柱頭鋼筋不得任意切除或彎折。
 - 鋼骨箱型柱內灌漿詳“鋼骨箱型柱內灌漿標準圖”



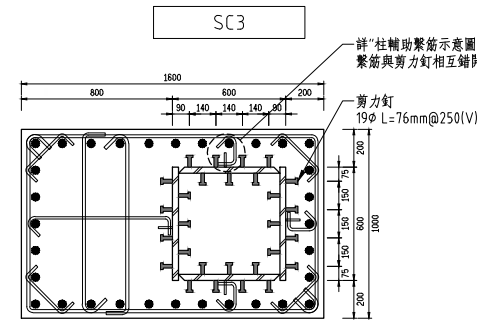
柱內加勁版開孔詳圖



RC斷面 1600x1000mm
●32-#10 (柱主筋直通連續)

柱端部(h/4)區箍筋: #4@10cm
柱中央區箍筋: #4@10cm
梁柱接頭區箍筋: #4@10cm

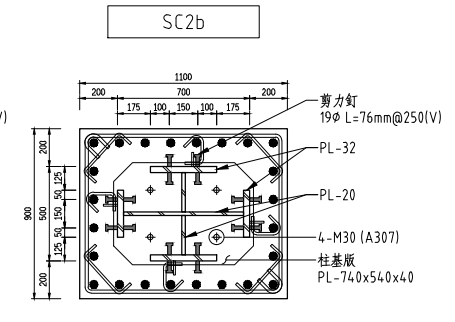
SECTION A-A



RC斷面 1600x1000mm
●32-#10 (柱主筋直通連續)

柱端部(h/4)區箍筋: #4@10cm
柱中央區箍筋: #4@10cm
梁柱接頭區箍筋: #4@10cm

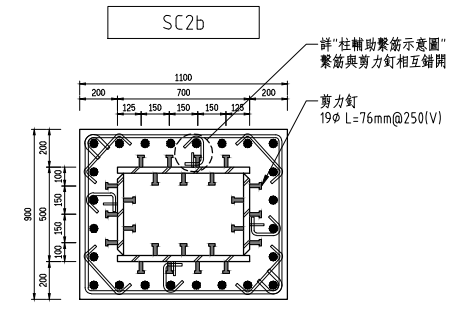
SECTION B-B



RC斷面 1100x900mm
●24-#10 (柱主筋直通連續)

柱端部(h/4)區箍筋: #4@10cm
柱中央區箍筋: #4@10cm
梁柱接頭區箍筋: #4@10cm

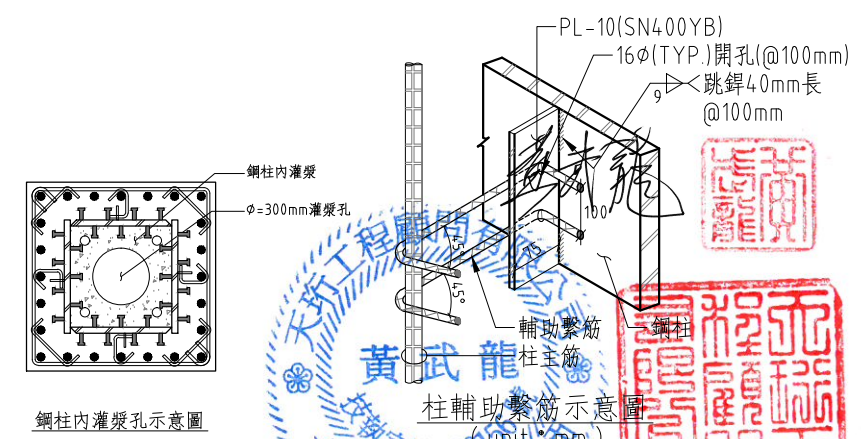
SECTION A-A



RC斷面 1100x900mm
●24-#10 (柱主筋直通連續)

柱端部(h/4)區箍筋: #4@10cm
柱中央區箍筋: #4@10cm
梁柱接頭區箍筋: #4@10cm

SECTION B-B



柱內灌漿孔示意圖

柱輔助繫筋示意圖